

PRODUCT INFORMATION PACKET

marathon®
Motors

Model No: 056C17G5328

Catalog No: G872

0.50 HP Explosion Proof Motor, 1 phase, 1800 RPM, 115/208-230 V, 56C Frame, EPFC
Explosion Proof NEMA Motors



Regal and Marathon are trademarks of Regal Beloit Corporation or one of its affiliated companies.
©2020 Regal Beloit Corporation, All Rights Reserved. MC017097E

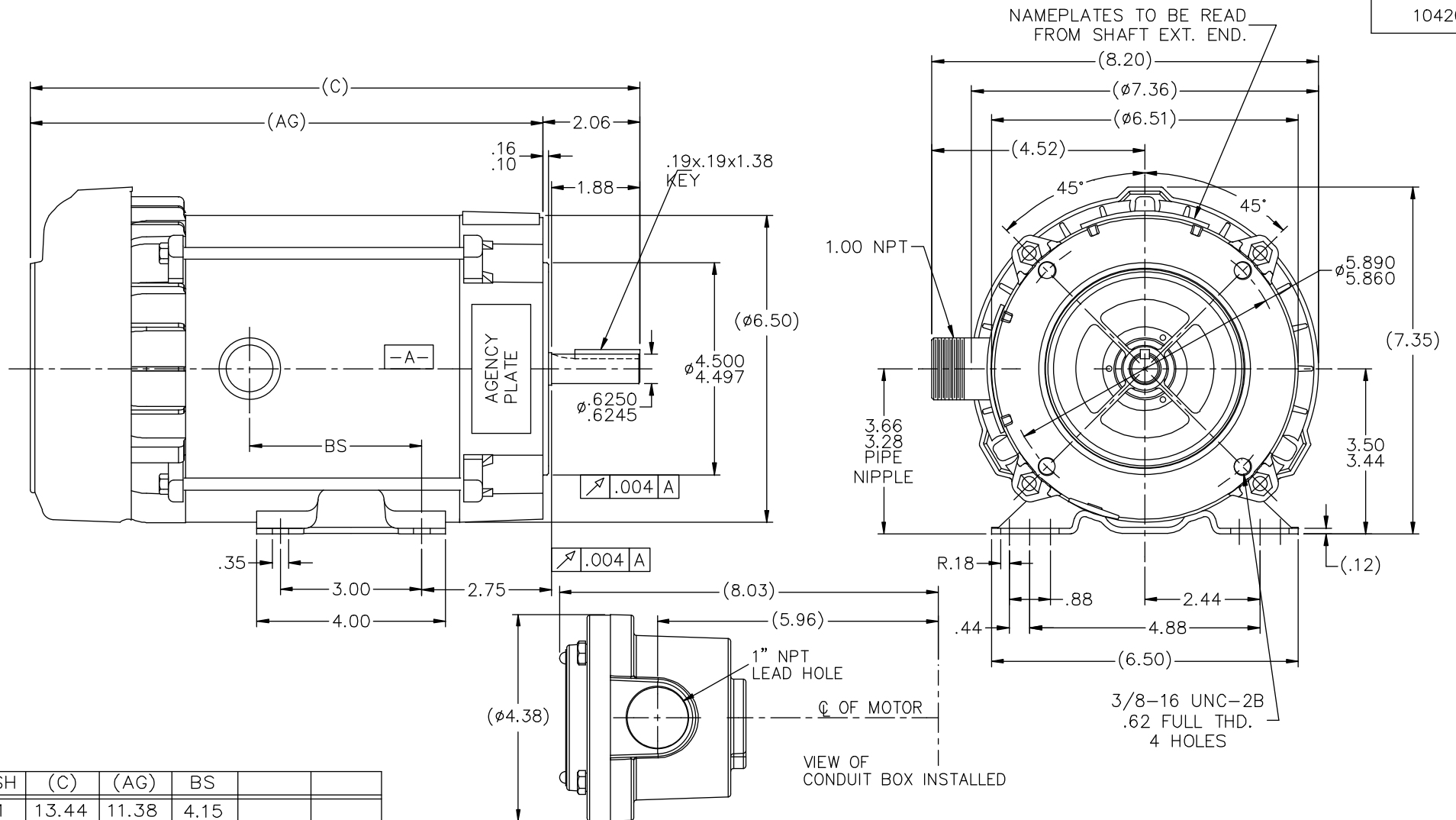
REGAL

Nameplate Specifications

Output HP	0.50 Hp	Output KW	0.37 kW
Frequency	60 Hz	Voltage	115/208-230 V
Current	8.8/4.2-4.4 A	Speed	1725 rpm
Service Factor	1.15	Phase	1
Efficiency	66 %	Power Factor	58
Duty	Continuous	Insulation Class	F
Design Code	NO DESIGN CODE	KVA Code	L
Frame	56C	Enclosure	Explosion Proof Fan cooled
Thermal Protection	Automatic	Ambient Temperature	40 °C
Drive End Bearing Size	6203	Opp Drive End Bearing Size	6203
UL	UL Listed And CSA Certified	CSA	Y
CE	N	IP Code	54
Hazardous Location	EXP PROOF CL I GR C&D CL II GR F&G T3B		

Technical Specifications

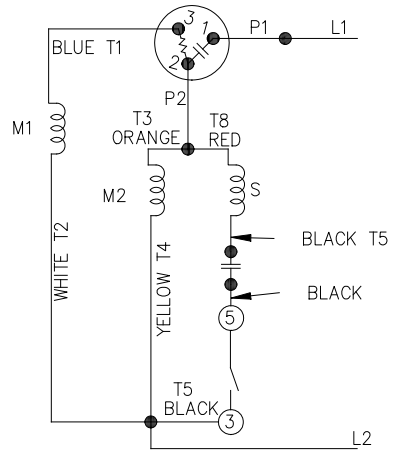
Electrical Type	Capacitor Start Induction Run	Starting Method	Across The Line
Poles	4	Rotation	Selective Counterclockwise
Resistance Main	0 Ohms	Mounting	Rigid base
Motor Orientation	Horizontal	Drive End Bearing	Ball
Opp Drive End Bearing	Ball	Frame Material	Rolled Steel
Shaft Type	NEMA 56	Overall Length	13.94 in
Frame Length	6.81 in	Shaft Diameter	0.625 in
Shaft Extension	2.06 in	Assembly/Box Mounting	F1 ONLY
Outline Drawing	B-104201-681	Connection Drawing	A-102005-84



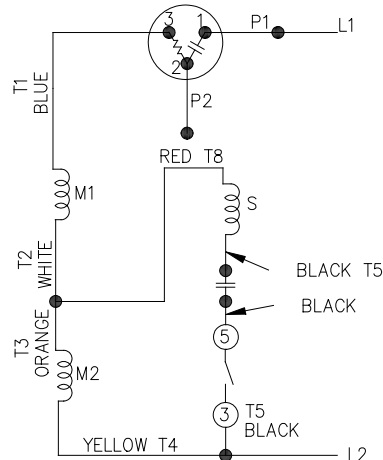
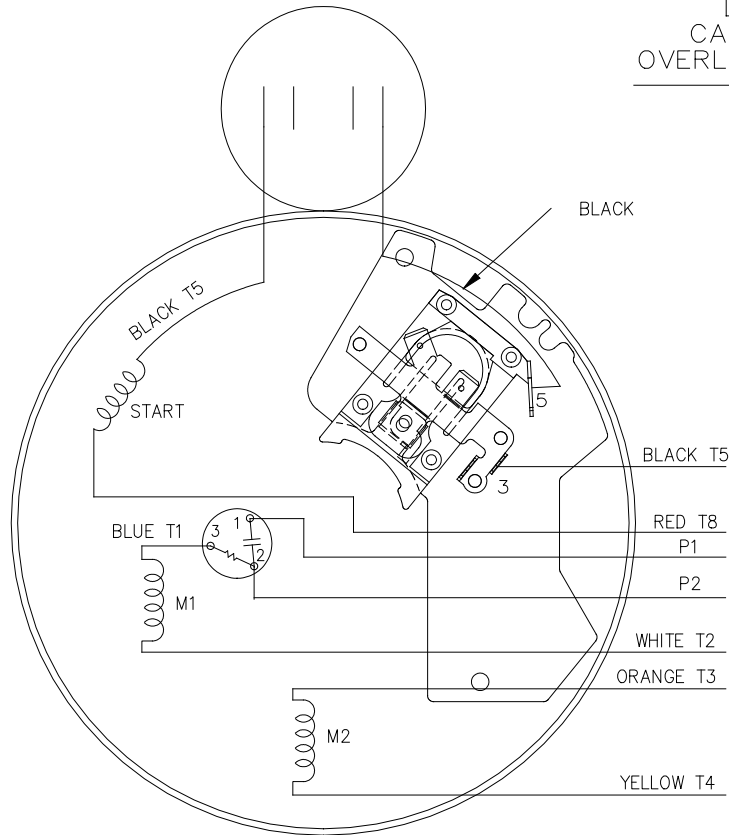
DASH	(C)	(AG)	BS		
631	13.44	11.38	4.15		
681	13.94	11.88	4.65		
731	14.44	12.38	5.15		
781	14.94	12.88	5.65		
831	15.44	13.38	6.15		
881	15.94	13.88	6.65		
931	16.44	14.38	7.15		
981	16.94	14.88	7.65		

6	COND. BOX INSTALLED VIEW UPDATED PER ECR-0044571	UD	10/15/13	ST	TOLERANCES UNLESS SPECIFIED		DRAWN MH 12-05-1996
5	REVISED C'BOX PER CN30784A	JJB	02/23/2007	ML	DEC. INCHES		CHK ML 12-06-1996
4	REV. D.E. BKT. DIM. TOL. FOR 4.499 DIM. CN46141	RWR	07-13-2005	ML	.X $\pm .1$		APPD GK 12-06-1996
3	REDRAWN IN AUTOCAD	TAT	06-28-2004	ML	.XX $\pm .03$		SCALE 1=2
2	ADDED CONDUIT BOX VIEW MU35604	HLB	02-26-2001		.XXX $\pm .005$		REF
1	NEW DRAWING CN 23099	MH	12-06-1996		.XXXX $\pm .0005$		FMF
NO.	REVISION	BY & DATE	CHK	ANG	FINISH		PREV
THIS DRAWING IN DESIGN AND DETAIL IS OUR PROPERTY AND MUST NOT BE USED EXCEPT IN CONNECTION WITH OUR WORK ALL RIGHTS OF DESIGN AND INVENTION ARE RESERVED THIS IS AN ELECTRONICALLY GENERATED DOCUMENT - DO NOT SCALE THIS PRINT						RFP	
						DIST WP	
						CAD FILE 104201	SIZE B
						DRAWING NO. 104201	PAGE 1 OF 1
							REV. 6

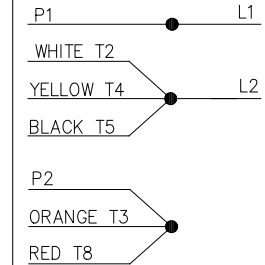
LOW VOLTAGE – C.C.W.



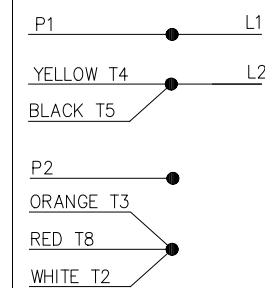
HIGH VOLTAGE – C.C.W.

DUAL VOLTAGE
CAPACITOR START
OVERLOAD SELECT ROT.

LOW VOLT. – C.C.W. ROT.



HIGH VOLT. – C.C.W. ROT.



FOR C.W. ROTATION
EITHER VOLTAGE
INTERCHANGE RED(T8)
WITH BLACK(T5) LEAD

NO.	REVISION	BY & DATE	CHK	ANG	TOLERANCES UNLESS SPECIFIED	DEC.	INCHES	TITLE	DRAWN PGK 07-16-1996
5	UPDATED TEMPLATE	MVG 12/11/2017	PVR	.X	±.1			REGAL™ Regal Beloit America, Inc.	CHK MRB 07-18-1996
4	REV'D CONNECTION TO MATCH ROTATION ISAAC 07-2021	JJJ 09/05/2007	ML	.XX	±.02			TITLE CONNECTION DIAGRAM	APPD GK 07-18-1996
3	ADDED T NO.'S MU16064	MH 08-09-1997		.XXX	±.005				SCALE 5=8
2	REDRAWN ON CADD, NO CHANGES	PGK 07-18-1996		.XXXX	±.0005			MAT'L.	REF
									FMF
									PREV
THIS DRAWING IN DESIGN AND DETAIL IS OUR PROPERTY AND MUST NOT BE USED EXCEPT IN CONNECTION WITH OUR WORK ALL RIGHTS OF DESIGN AND INVENTION ARE RESERVED THIS IS AN ELECTRONICALLY GENERATED DOCUMENT – DO NOT SCALE THIS PRINT								CAD FILE 102005_84	SIZE A
								DIST WP	DRAWING NO. 102005-84
									PAGE OF 5
									REV. 5

CERTIFICATION DATA SHEET

Model#: 56C17G5328 B **WINDING#:** ZC404 R1 3
CONN. DIAGRAM: A-102005-84 **ASSEMBLY:** F1 ONLY
OUTLINE: B-104201-681

TYPICAL MOTOR PERFORMANCE DATA

HP	KW	SYNC. RPM	F.L. RPM	FRAME	ENCLOSURE	KVA CODE	DESIGN
1/2	.37	1800	1725	56C	EPFC	L	NO DESIGN CODE

PH	Hz	VOLTS	FL AMPS	START TYPE	DUTY	INSL	S.F	AMB°C	ELEVATION
1	60	115/208-230	8.8/4.2-4.4	ACROSS THE LINE	CONTINUOUS	F3	1.15	40	3300

FULL LOAD EFF: 66	3/4 LOAD EFF: 62.5	1/2 LOAD EFF: 54.3	GTD. EFF	ELEC. TYPE	NO LOAD AMPS
FULL LOAD PF: 58	3/4 LOAD PF: 49.5	1/2 LOAD PF: 40.5	0	CAP START IND RUN	7 / 3.5

F.L. TORQUE	LOCKED ROTOR AMPS	L.R. TORQUE	B.D. TORQUE	F.L. RISE°C
24.1 LB-FT	42.6 / 21.3	83.8 LB-FT 348	72.3 LB-FT 300	55

SOUND PRESSURE @ 3 FT.	SOUND POWER	ROTOR WK^2	MAX. WK^2	SAFE STALL TIME	STARTS /HOUR	APPROX. MOTOR WGT
- dBA	- dBA	0 LB-FT^2	- LB-FT^2	10 SEC.	-	0 LBS.

*** SUPPLEMENTAL INFORMATION ***

DE BRACKET TYPE	ODE BRACKET TYPE	MOUNT TYPE	ORIENTATION	SEVERE DUTY	HAZARDOUS LOCATION	DRIP COVER	SCREENS	PAINT
C-FACE	STANDARD	RIGID	HORIZONTAL	FALSE	EXP PROOF CL I GR C&D CL II GR F&G T3B	FALSE	NONE	GRAY (POWDER)

BEARINGS		GREASE	SHAFT TYPE	SPECIAL DE	SPECIAL ODE	SHAFT MATERIAL	FRAME MATERIAL
DE	OPE						
BALL	BALL	POLYREX EM	T	NONE	NONE	1144 STRESSPROOF (C-223)	ROLLED STEEL
6203	6203						

THERMO-PROTECTORS				THERMISTORS	CONTROL	SPACE /m HEATERS
THERMOSTATS	PROTECTORS	WDG RTDs	BRG RTDs			
NONE	AUTOMATIC	NONE	NONE	NONE	FALSE	NONE VOLTS

If Inverter equals NONE, contact factory for further information

*
N
O
T
E
S
*

INVERTER TORQUE: NONE
INV. HP SPEED RANGE: NONE
ENCODER: NONE
NONE NONE
NONE NONE PPR
BRAKE: NONE NONE
NONE P/N NONE
NONE NONE
NONE FT-LB NONE V NONE Hz

DATE: 06/27/2017 07:23:14 AM
 FORM 3531 REV.3 02/07/99
 ** Subject to change without notice.


MARATHON ELECTRIC CORPORATION

TYPICAL PERFORMANCE CURVE for AC MOTOR

Customer

Curve at

230

Volts

 HP 0.50

 PHASE 1

 Model No 56C17G5328
60

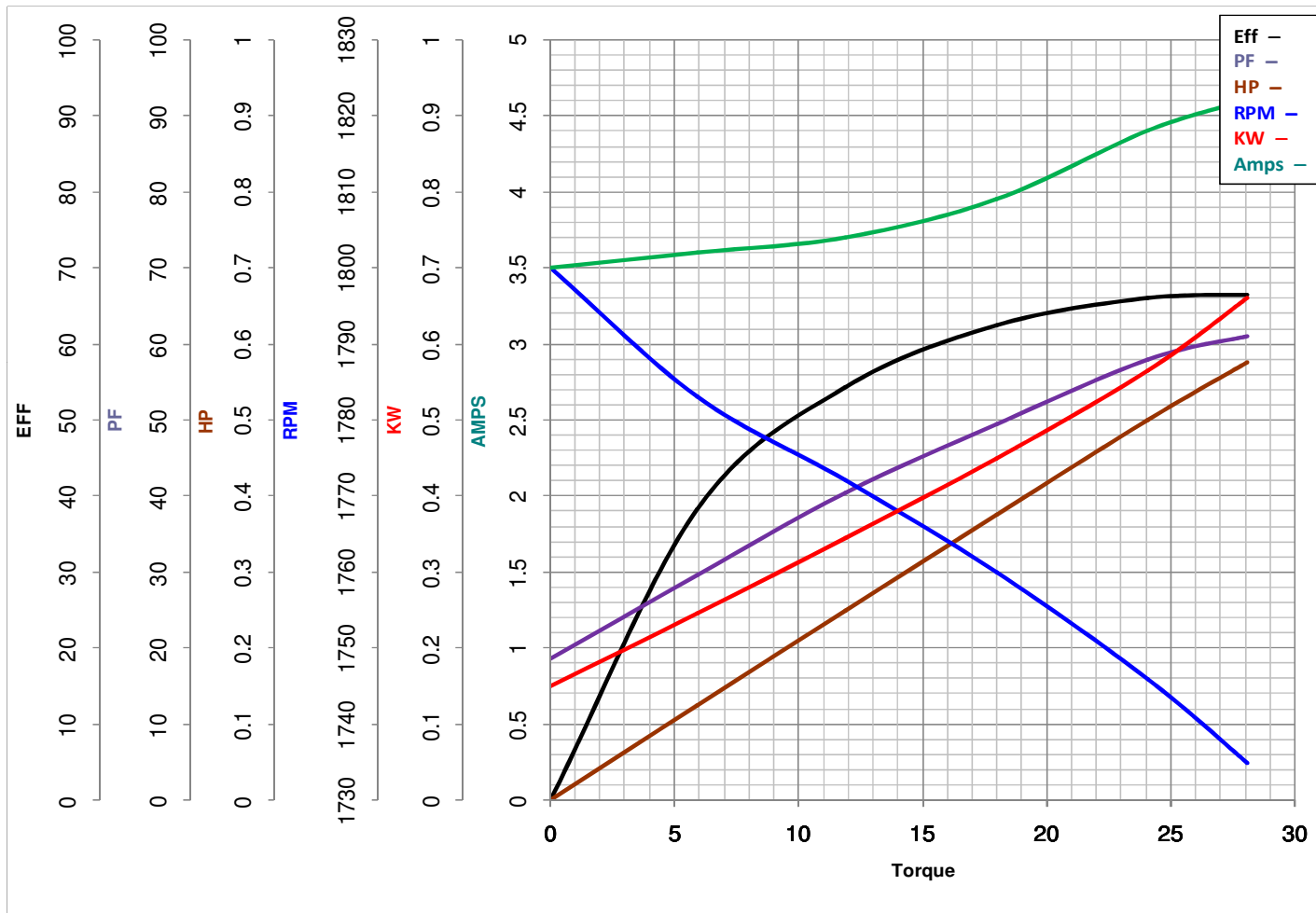
HZ

 VOLTS 115/208-230
0.5

HP

 Catalog No G872

 HZ 60

 RPM 1725


Torque in Oz.Ft

 FL TORQUE 24.1 Oz.Ft

 BD TORQUE 72.3 Oz.Ft

 LR TORQUE 83.8 Oz.Ft

WINDING ZC404-3

 FL AMPS 8.8/4.2-4.4

 PU TORQUE 61.2 Oz.Ft

 LR AMPS 21.3

Date 1/10/2019